

XPO2 Antibody
Purified Rabbit Polyclonal Antibody (Pab)
Catalog # AP51117**Specification**

XPO2 Antibody - Product Information

| | |
|-------------------|------------------------|
| Application | WB |
| Primary Accession | P55060 |
| Reactivity | Human, Mouse, Rat |
| Host | Rabbit |
| Clonality | Polyclonal |
| Calculated MW | 110 KDa |
| Antigen Region | 11 - 70 |

XPO2 Antibody - Additional Information**Gene ID** 1434**Other Names**

Exportin-2, Exp2, Cellular apoptosis susceptibility protein, Chromosome segregation 1-like protein, Importin-alpha re-exporter, CSE1L, CAS, XPO2

Target/Specificity

KLH conjugated synthetic peptide derived from human XPO2

Dilution

WB~~ 1:1000

Format

0.01M PBS, pH 7.2, 0.09% (W/V) Sodium azide, Glycerol 50%

Storage

Store at -20 °C. Stable for 12 months from date of receipt

XPO2 Antibody - Protein Information**Name** CSE1L**Synonyms** CAS {ECO:0000303|PubMed:7479798}, XPO2**Function**

Export receptor for importin-alpha. Mediates importin-alpha re-export from the nucleus to the cytoplasm after import substrates (cargos) have been released into the nucleoplasm. In the nucleus binds cooperatively to importin-alpha and to the GTPase Ran in its active GTP-bound form. Docking of this trimeric complex to the nuclear pore complex (NPC) is mediated through binding to nucleoporins. Upon transit of a nuclear export complex into the cytoplasm, disassembling of the complex and hydrolysis of Ran-GTP to Ran-GDP (induced by RANBP1 and RANGAP1, respectively) cause release of the importin-alpha from the export receptor. CSE1L/XPO2 then return to the

nuclear compartment and mediate another round of transport. The directionality of nuclear export is thought to be conferred by an asymmetric distribution of the GTP- and GDP-bound forms of Ran between the cytoplasm and nucleus.

Cellular Location

Cytoplasm. Nucleus. Note=Shuttles between the nucleus and the cytoplasm.

Tissue Location

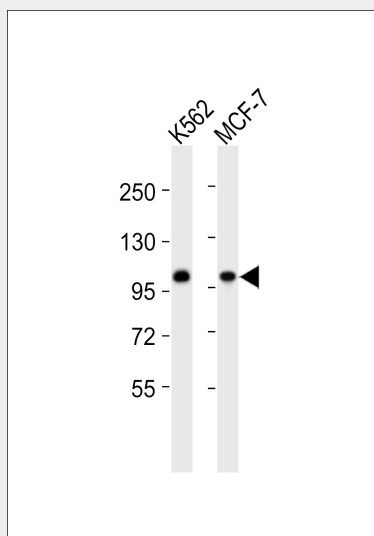
Detected in brain, placenta, ovary, testis and trachea (at protein level) (PubMed:10331944). Widely expressed (PubMed:10331944). Highly expressed in testis and in proliferating cells (PubMed:10331944, PubMed:7479798).

XPO2 Antibody - Protocols

Provided below are standard protocols that you may find useful for product applications.

- [Western Blot](#)
- [Blocking Peptides](#)
- [Dot Blot](#)
- [Immunohistochemistry](#)
- [Immunofluorescence](#)
- [Immunoprecipitation](#)
- [Flow Cytometry](#)
- [Cell Culture](#)

XPO2 Antibody - Images



All lanes : Anti-XPO2 Antibody at 1:1000 dilution Lane 1: K562 whole cell lysates Lane 2: MCF-7 whole cell lysates Lysates/proteins at 20 µg per lane. Secondary Goat Anti-Rabbit IgG, (H+L), Peroxidase conjugated at 1/10000 dilution Predicted band size : 110 kDa Blocking/Dilution buffer: 5% NFDM/TBST.

XPO2 Antibody - Background

Export receptor for importin- α . Mediates importin- α re-export from the nucleus to the cytoplasm after import substrates (cargos) have been released into the nucleoplasm. In the nucleus binds cooperatively to importin- α and to the GTPase Ran in its active GTP-bound form. Docking

of this trimeric complex to the nuclear pore complex (NPC) is mediated through binding to nucleoporins. Upon transit of a nuclear export complex into the cytoplasm, disassembling of the complex and hydrolysis of Ran-GTP to Ran-GDP (induced by RANBP1 and RANGAP1, respectively) cause release of the importin-alpha from the export receptor. CSE1L/XPO2 then return to the nuclear compartment and mediate another round of transport. The directionality of nuclear export is thought to be conferred by an asymmetric distribution of the GTP- and GDP-bound forms of Ran between the cytoplasm and nucleus.

XPO2 Antibody - References

Brinkmann U.,et al.Proc. Natl. Acad. Sci. U.S.A. 92:10427-10431(1995).
Brinkmann U.,et al.Genomics 58:41-49(1999).
Jiang M.C.,et al.Mol. Cell Biol. Res. Commun. 4:353-358(2001).
Ota T.,et al.Nat. Genet. 36:40-45(2004).
Deloukas P.,et al.Nature 414:865-871(2001).